

1. Identification

Catalogue Number

M260675

Lot Number

2-ZPK-113-1

Product Name

Methotrexate

Synonyms

N-[4-[[[2,4-Diamino-6-pteridyl)methyl][methylamino]benzoyl]-L-glutamic Acid; (+)-Amethopterin; 4-Amino-N10-methylpteroylglutamic Acid; 4-Amino-N10-methylfolic Acid; Antifolan; CL 14377; EMT 25299; Emtexate; Ledertrexate; MTX; L-Metatrexan; Methylaminopterin; Mexate; NSC 740; R 9985; Rheumatrex; Trexall;

CAS Number

59-05-2

Solubility

Aqueous Base (Slightly), DMSO (Slightly)

Molecular Formula

C₂₀H₂₂N₈O₅

Source of Product

N/A

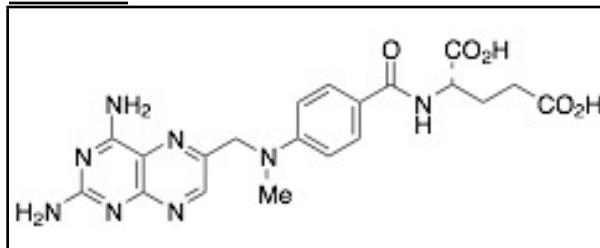
Molecular Weight

454.45

Purity

>95%

Structure



Shipping Condition

This Product Is Stable To Be Shipped At Room Temperature

Long Term Storage Conditions

4°C, Hygroscopic

2. Warnings

Hygroscopic

3. Analytical Information

Tests

Appearance

Specifications

Yellow to Dark Yellow Solid

Results

Yellow Solid

NMR

Conforms to Structure

Conforms

Elemental Analysis

Conforms

%C: 47.39, %H: 5.36, %N: 22.07

HPLC Purity

>95%

98.45% (305 nm)

MS

Conforms to Structure

Conforms

Additional Information

N/A

Purity is based on the analytical results of the tests performed. NMR and Elemental Analysis (if available) may have an accuracy of $\pm 2\%$. Isotopic purity is based on mass distribution observed. The contents of the specifications are subject to change without advance notice, and the specification values displayed here are the most up to date values.

4. Signatures

Reviewed by



Meenakshi Sharma

Product Quality Specialist

Reviewed by



Toni Rantanen

Manager, Quality Assurance

C of A Approved by



Chanell Chu

Quality Assurance Associate

Test Date

4/5/2024

Retest Date

4/3/2028